



HEATING



COOLING

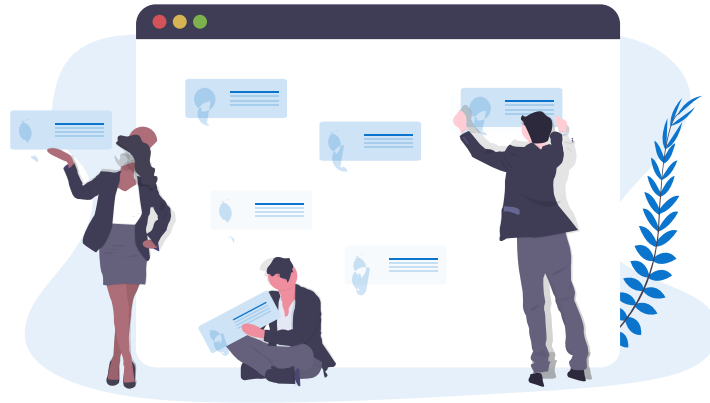


VOLMAT
TRADE

PRODUCT CATALOGUE

ABOUT US

Founded in Ankara with 10 years of experience in air conditioning, VoIMat offers the supply service of air conditioning and ventilation equipment in Turkey and nearby geography. Our scope of supply covers from project planning to renewal and commissioning in air conditioning systems, which are better understood to be managed wisely considering the global warming and pandemic that we have experienced in recent years.



The air conditioning systems, which have become the most important component of facility management, as well as the reliability of the products offered, and the supply speed are now the primary dynamics. Accordingly, our supply capacity covers hotels, shopping malls, industrial facilities, business and living centers and residences. VoIMat's guarantee and responsibility offers services in accordance with the applicable legislation, taking into consideration the priorities of global environmental policies. The most fundamental principle of Voimat Trade is to create a business model that will ensure the benefit and satisfaction of all parties, including our Customers, Business Partners and Employees

OUR TARGETS AND PRINCIPLES

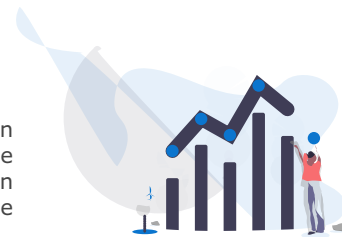
To offer long-term, innovative, high quality, environment, and human health friendly, economical and practical solutions in the supply of Heating & Cooling, ventilation systems and spare parts in the Middle East and the Balkans, especially in Turkey and the Turkic countries.

Our principles:

- VoIMat operates result-oriented and pays importance to the sharing of information in all processes of its service.
- VoIMat is sensitive to environment and human health.
- VoIMat prioritizes the customer's needs and operates customer-oriented.
- VoIMat prioritizes quality and the happiness of employees.

OUR PRINCIPLES OF OPERATION

VoIMat completes the product certification, logistics and customs clearance processes in the fastest, most economical and most reliable way as they vary depending on the legislation of the country where the secondary customer is located and causes an important loss of time and cost for the manufacturer, our first customer, during the import process.



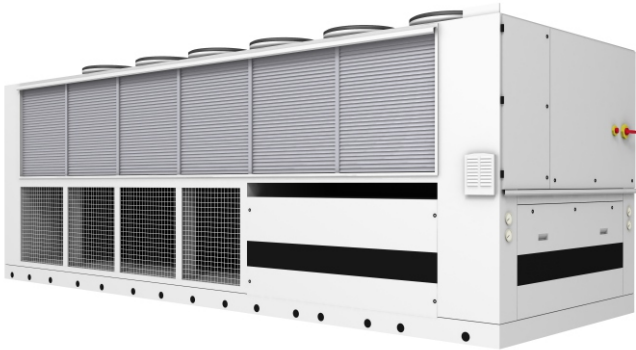
The requirements and quantity list of the project for which product supply is required is received from the customer (BOQ) and a quotation is submitted to the relevant customer by our competent staff specialized in the project consultancy.

The quotation is structured in a way that all costs and risks are borne by the secondary customer (recipient end user) (EWX), or transportation and insurance processes are undertaken (CIP), at the request of the customer. VoIMat will ensure that the product is supplied and delivered to the relevant address/customs as soon as possible, with a minimum risk, by providing the customer with continuous feedback during the term of supply contract.



COOLING

CHILLER



Capacity: 30-1700 kW



Capacity: 39 - 550 kW



Capacity: 17-33 kW



Capacity: 250-1700 kW



Capacity: 290 - 1286 kW



Capacity: 219 - 315 kW

AIR HANDLING UNITS



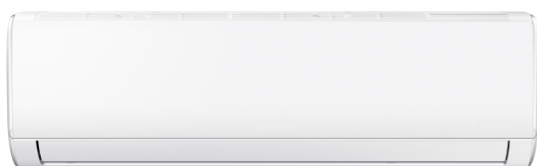
Performance range : from 1000 m³/h to 125,000 m³/h



Air handling units for hygienic air conditioning with a flow of 2200 m³/h - 11 000 m³/h

FAN COIL UNITS

Types: floor in decorative case, hidden floor, wall, ceiling in decorative case, concealed ceiling, 4-way cassette, channel
 • Connection: two-pipe and four-pipe



VRF SYSTEMS



OUTDOOR UNITS
Capacity from 22 kW
to 180 kW



One way and two way cassette type
indoor units
• from 2.2 to 16 kW



Thin-duct indoor units
• from 2.2 to 8.0 kW



High static pressure indoor units
• from 5.6 to 28 kW

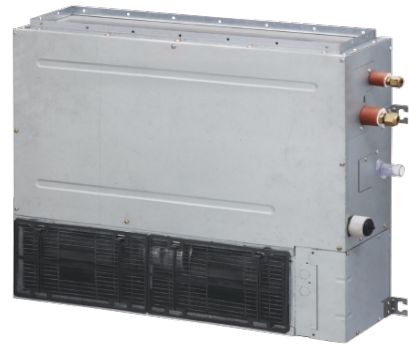


Floor type indoor units
• from 2.2 to 7.1 kW

VRF SYSTEMS



Ceiling-type indoor units
 • 4,5 - 16,0 kW Washable filter



Floor type hidden indoor units
 • from 2.2 to 7.1 kW



Wall mounted indoor units
 • Compact, standard wall mounted indoor units

HEAT RECOVERY UNITS

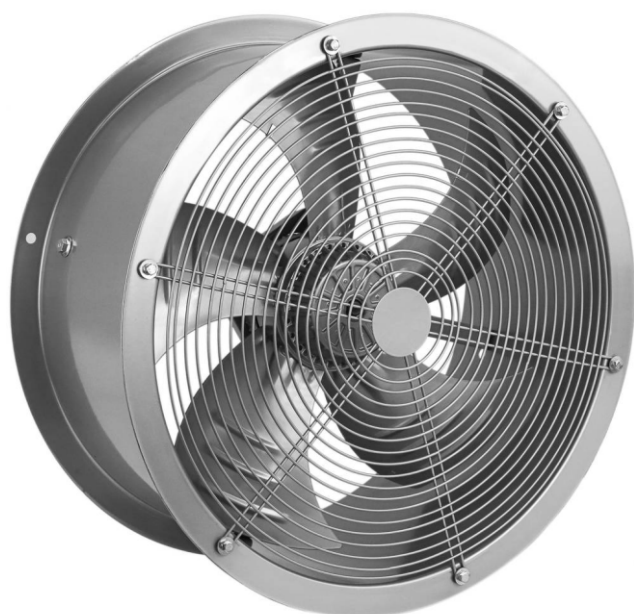


CEILING TYPE HEAT RECOVERY
 UNIT WITH DX COIL



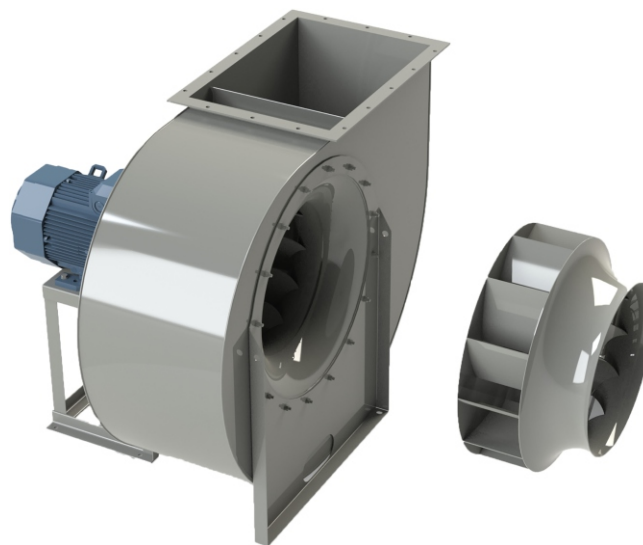
VERTICAL TYPE HEAT
 RECOVERY UNIT

FANS

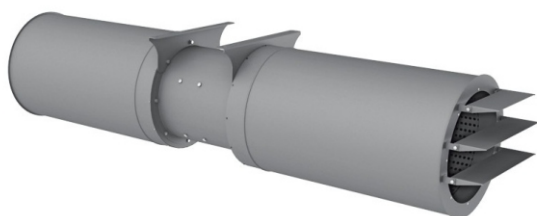
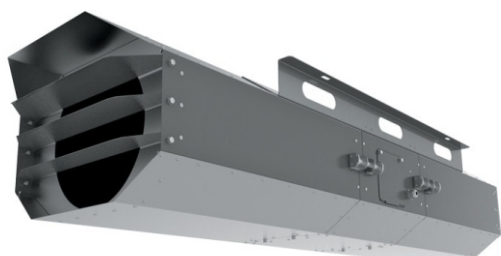


AXIAL FRESH AIR FANS

- Diameter range Ø 400-1250 mm
- Protection class IP55



LOW PRESSURE SNAIL FAN



AXIAL FANS FOR UNDERGROUND PREMISES

- Diameter range Ø 315-355-400-500 mm
- 300 ° C / 2 h according to EN 12101-3
- Protection class IP55



ROOF TYPE FAN

- Diameter range Ø 400-900 mm
- Protection class IP55

DAMPERS



RECTANGULAR VOLUME DAMPER



CIRCULAR DAMPER

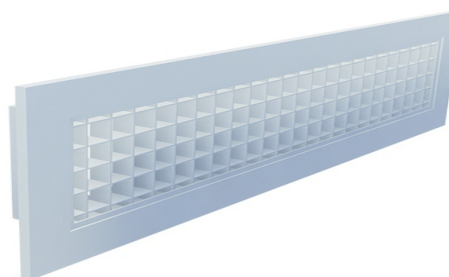
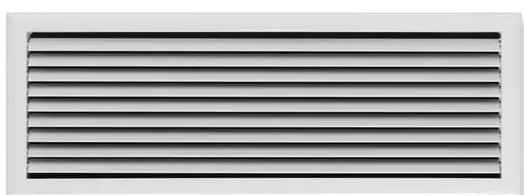


RECTANGULAR BACKDRAFT DAMPER



RECTANGULAR FIRE DAMPER

GRILLES

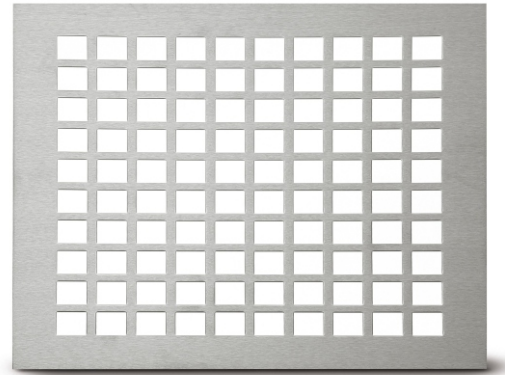


LINEAR GRILLES

GRILLES



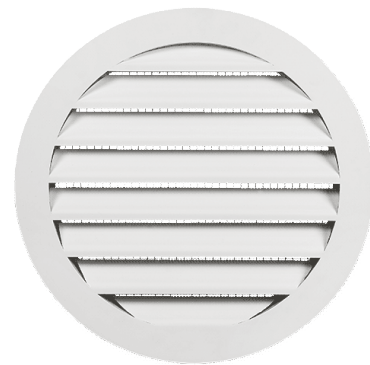
LINEAR FLOOR GRILLES



PERFORATED GRILLES



EXTERNAL LOUVRE



CIRCULAR LOUVRE

DIFFUSERS



CIRCULAR DIFFUSER



DISC VALVE

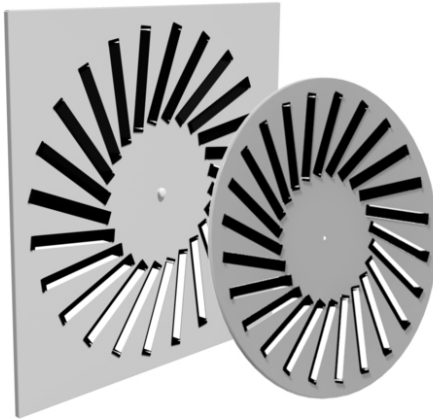
DIFFUSERS



DISPLACEMENT DIFFUSER



TELESCOPIC DIFFUSER



SWIRL DIFFUSER



NOZZLE GROUP

FLEXIBLE DUCTS

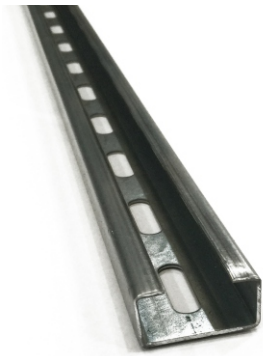


FLEXIBLE AIR DUCT

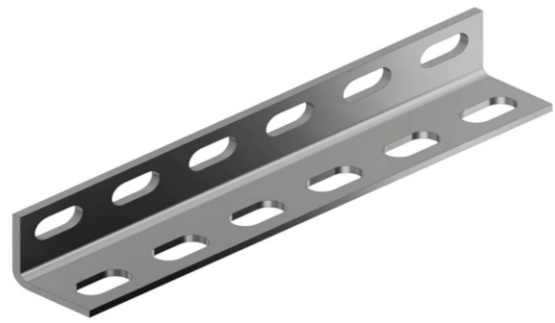


FLEXIBLE DUCT INSULATION

HANGAR AND SUPPLY PROFILE



C PROFILE



L PROFILE



G PROFILE



U PROFILE



L BRACKET



T BRACKET



FLANGE CORNER
ELEMENT

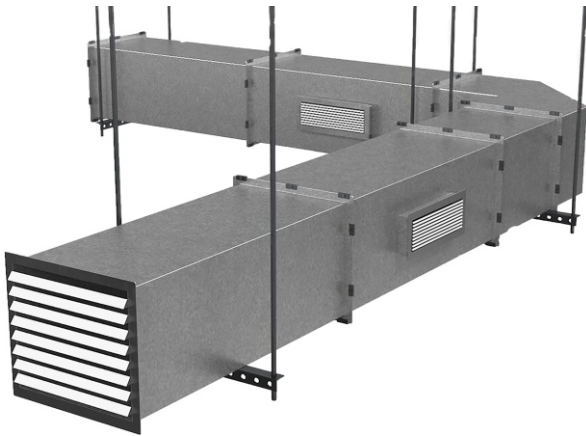
DUCTS



SPIRAL DUCT



90-DEGREE ELBOW
SPIRAL DUCT



SQUARE DUCT



90-DEGREE ELBOW
SQUARE DUCT

INSULATIONS



GLASS WOOL
INSULATION



RUBBER INSULATION



ROCKWOOL
INSULATION

ASPIRATORS



WALL AND CEILING
AXIAL ASPIRATORS



INDUSTRIAL TYPE
ASPIRATORS



RECTANGULAR ASPIRATORS



CEILING TYPE ASPIRATORS

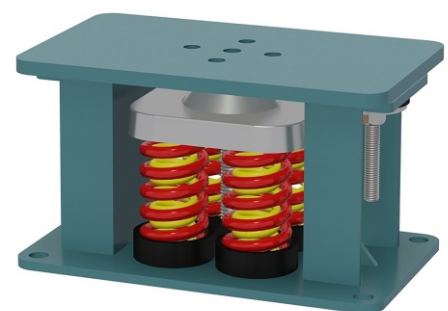
SEISMIC RESTRAINT SYSTEMS



SEISMIC CABLE
SETS



RIGID SWAY
BRACES

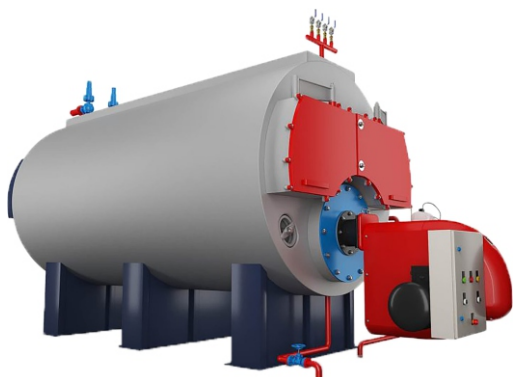


SEISMIC ISOLATORS



HEATING

BOILERS



STEAM BOILERS

- Power range: 100-5000 kW
- Operating range: 20-200 °C
- Maximum working pressure: 8 bar



Floor Type Condensing Boilers

- Heating modulation range (80/60 °C)
- Power 980 kW with 4 boilers with cascade connection



LIQUID AND GAS FUEL 2-PASS AND 3-PASS STEEL BOILERS

- Power range: from 35 kW to 3488 kW



CONDENSING BOILERS

- Heating modulation range (50/30 °C)
- Power 395 kW with 4 boilers with cascade connection

HEAT PUMP



AIR-WATER HEAT PUMPS

- Capacity: from 8 kW to 16 kW



BURNERS



LIQUID FUEL BURNERS
Power range: 2.5-76.6 kg / h



NATURAL GAS BURNERS
• In the power range 3.1-194 m³ / h
(29.5-1.861 kW)

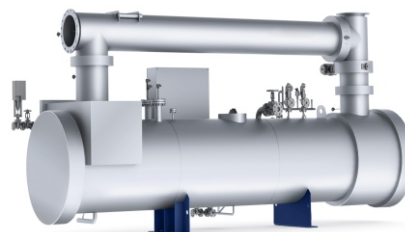


COMBINED BURNERS
• Combined electronic proportional fuel
burners, gas and diesel fuel
• Power range: from 100 to 8000 kW

HEAT EXCHANGERS



PLATE HEAT EXCHANGERS

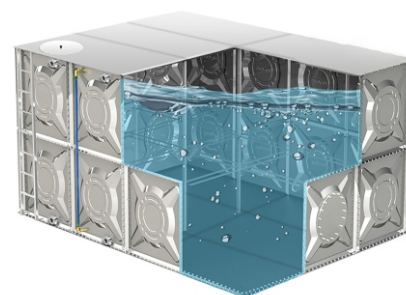


PIPE TYPE HEAT EXCHANGERS



AIR COOLING HEAT EXCHANGERS

TANKS



ACCUMULATION TANKS

- Capacity: 100 - 5000 liters
- Coating: epoxy paint, polyurethane coating
- Electric power: from 1 to 30 kW
- Heat capacity: from 20 °C to 90 °C

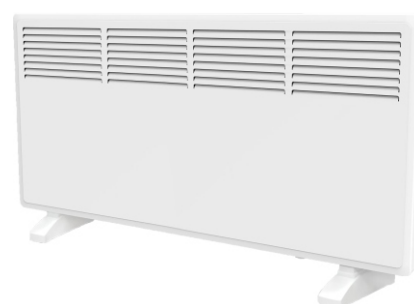
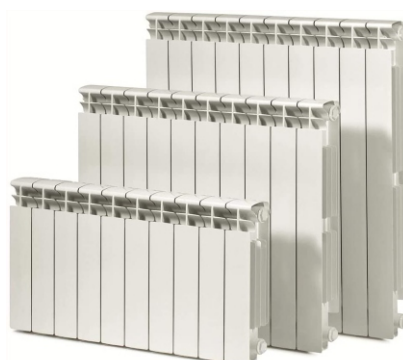
EXPANSION TANKS

- Capacity range: 24 - 5000 literes
- Working pressure: 6 - 16 bar

MODULER TANKS

- Capacity range: 0.625 - 306000 literes

PANEL RADIATORS



PANEL, ALUMINIUM AND CONVECTOR RADIATORS

- There are models of all radiators with a height of 300 to 900 mm, 400 to 3000 mm of 21 different lengths (400-1800 mm in length with 100 mm pitch).

VALVES



GATE VALVES



BALL VALVES



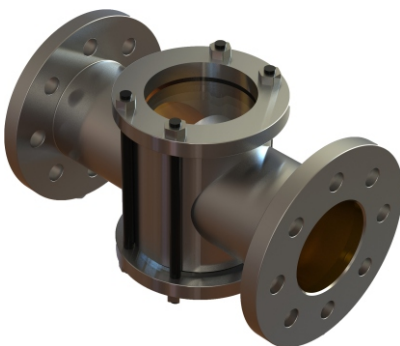
BUTTERFLY VALVES



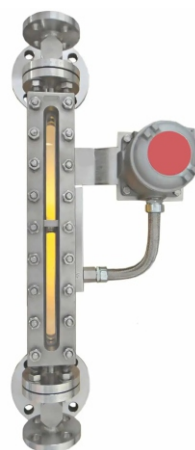
STEAM VALVES



SAFETY VALVES



FLOW INDICATOR



LEVEL INDICATOR



PRESSURE INDICATOR

DUCT TYPE HEATERS



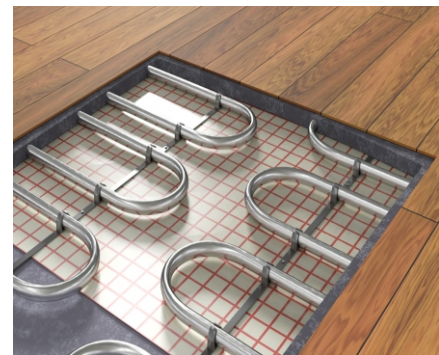
CIRCULAR AND SQUARE
TYPE DUCT HEATERS



FLOOR TYPE HEATERS



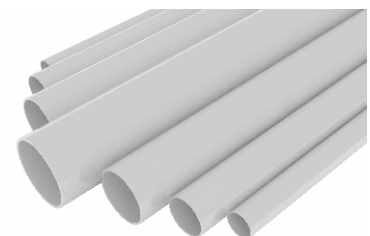
FLOOR HEATING



PIPES



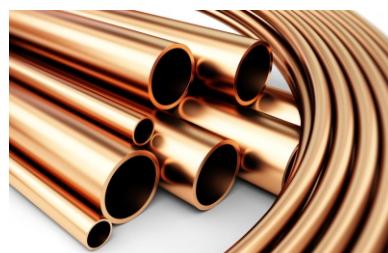
PPRC PIPE AND FITTINGS



PVC PIPE AND FITTINGS

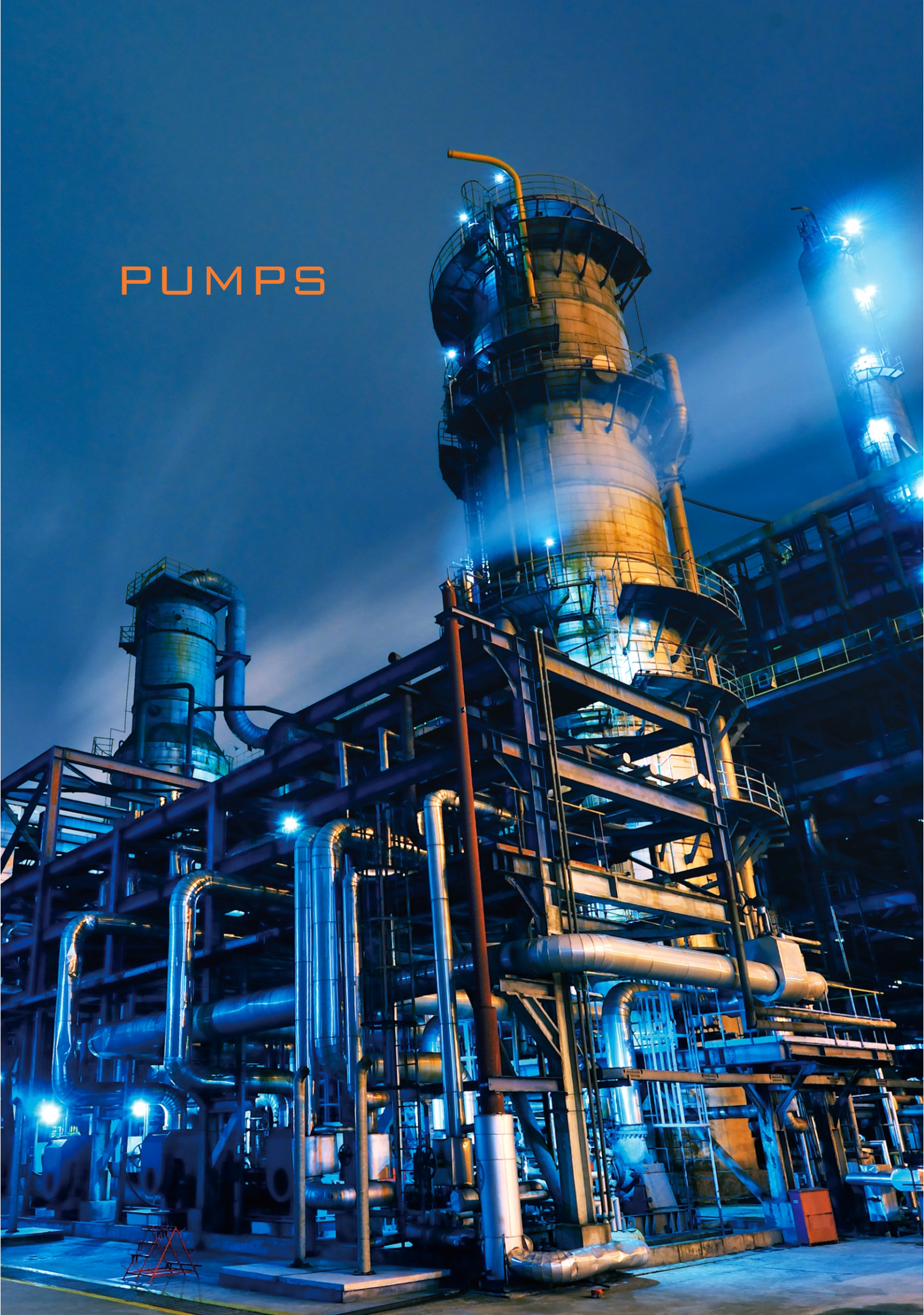


STEEL PIPE AND FITTINGS



COOPER PIPE AND
FITTINGS

PUMPS



PUMPS



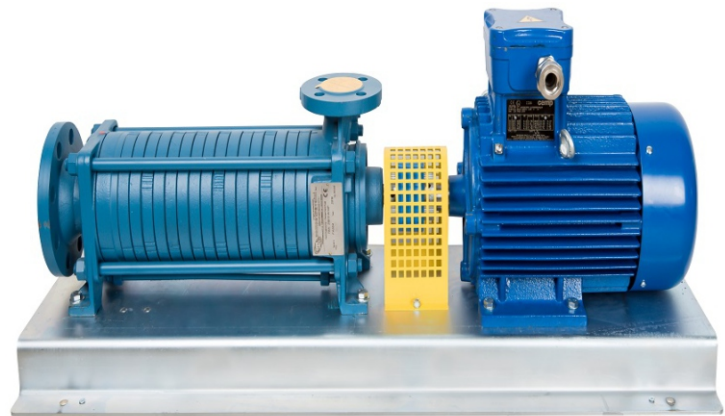
CENTRIFUGAL PUMP



RECESSED PUMP



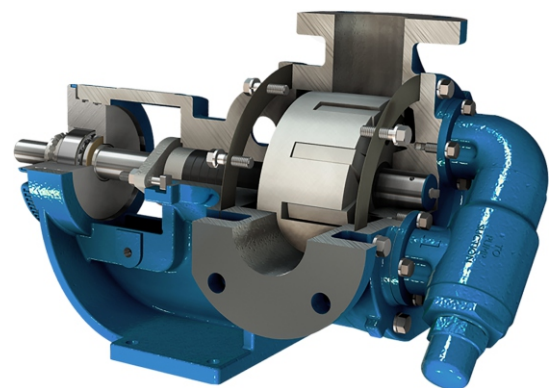
VERTICAL STEPPED PUMP



LPG PUMP



GEAR PUMP



PUMPS



HYDROPHORE SET



SUBMERSIBLE SEWAGE PUMP



CIRCULATION PUMP

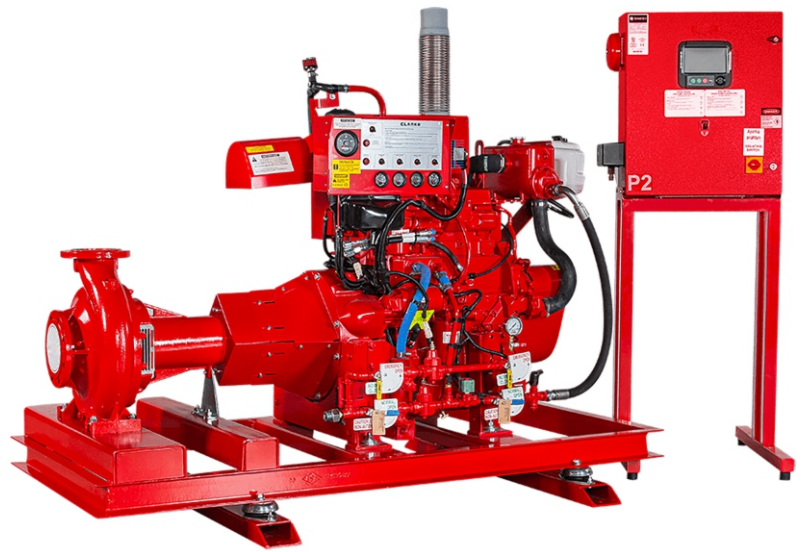


FIRE FIGHTING EQUIPMENTS

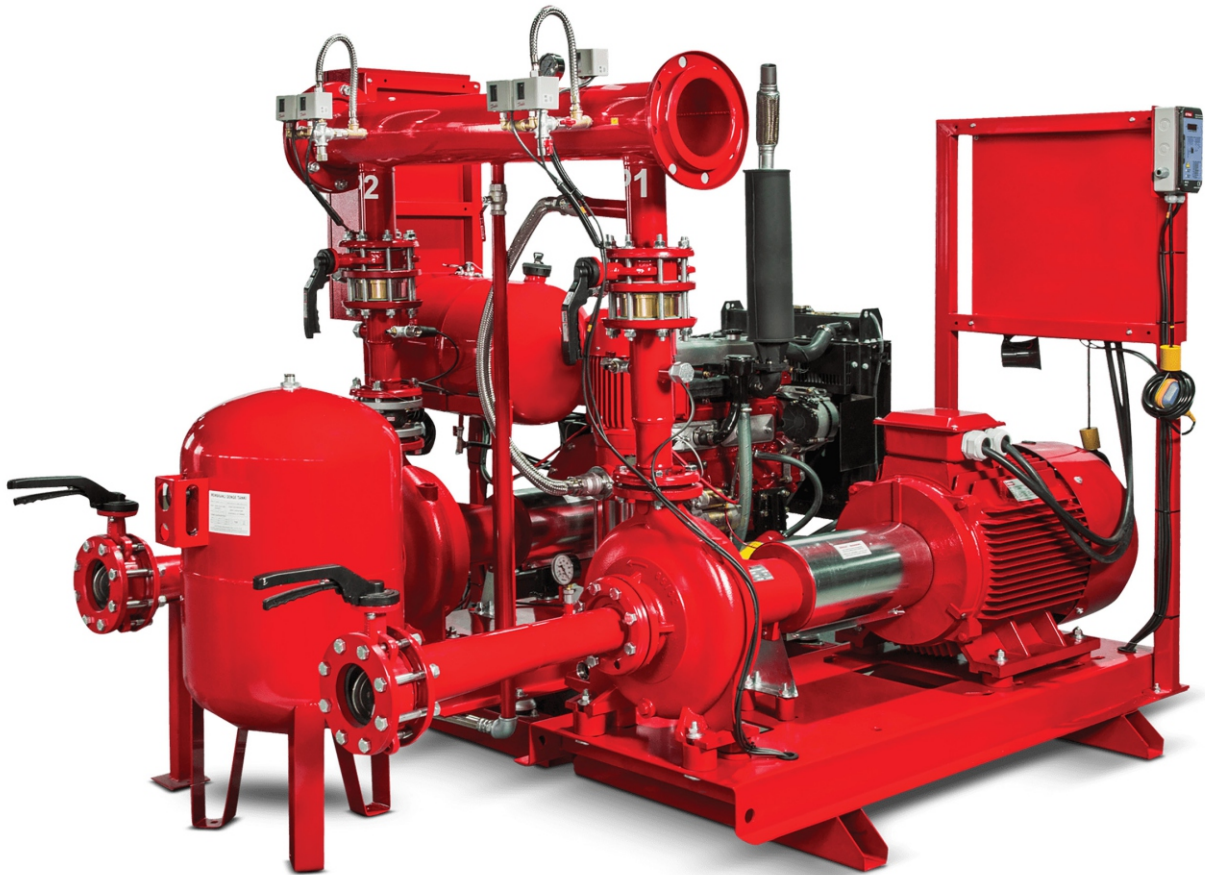
DIESEL AND ELECTRICAL PUMPS



Capacity : 1500 imp / 4500 imp



Capacity: 750 imp / 1500 imp



Capacity : 25 imp / 1500 imp

SPRINKLERS



PENDENT TYPE



RECESSED ESCUTCHEON



SIDEWALL TYPE



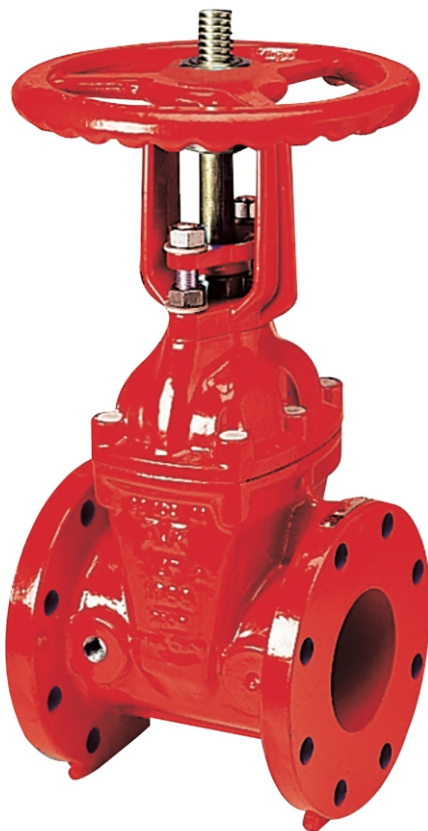
UPRIGHT TYPE

INDICATING BUTTERFLY VALVES



- UL / FM Approved
- Automatic sprinkler is an important part of the system
- Opens and closes the water passage
- Indicates the off position by automatic signaling in the closed position
- Nominal diameter: 1 1/2 " - 8"

GATE VALVES AND INDICATORS

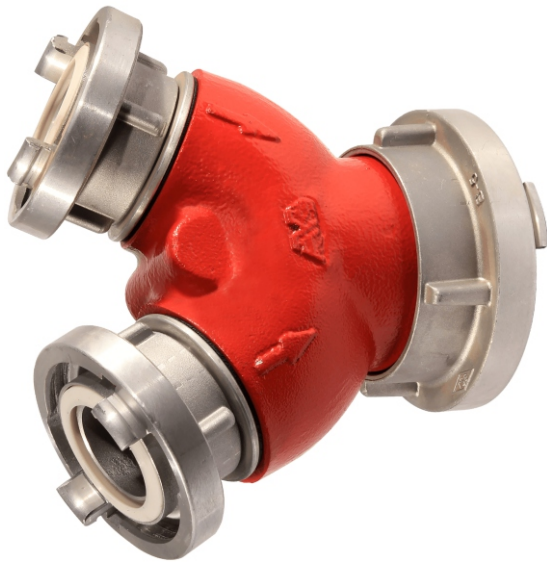


GATE VALVES FLANGED



VERTICAL TYPE INDICATOR POST

FIRE FIGHTING CONNECTOR VALVES



TWO WAY INLET



WET AND DRY ALARM VALVE



LANDING VALVE

- UL/FM Approved
- In the event of a pump failure or water depletion it is used to connect to a fire system for feeding
- 1 Storz coupling, plug and chain
- Nominal diameter: 2 1/2 "NPT Threaded (fire-proof connecting valve): 4x21 / 2x21 / 2 NPT Threaded (fire hydrant outlet)

SAFETY VALVES



- UL / FM Approved
- Used to balance the pressure in a fire-Fighting unit
- Nominal diameter: 2 1/2 " - 8

FIRE FIGHTING PROTECTION EQUIPMENT



FIRE EXTINGUISHERS



Co2 FIRE EXTINGUISHERS SYSTEMS



TUNNEL FIRE CABINET



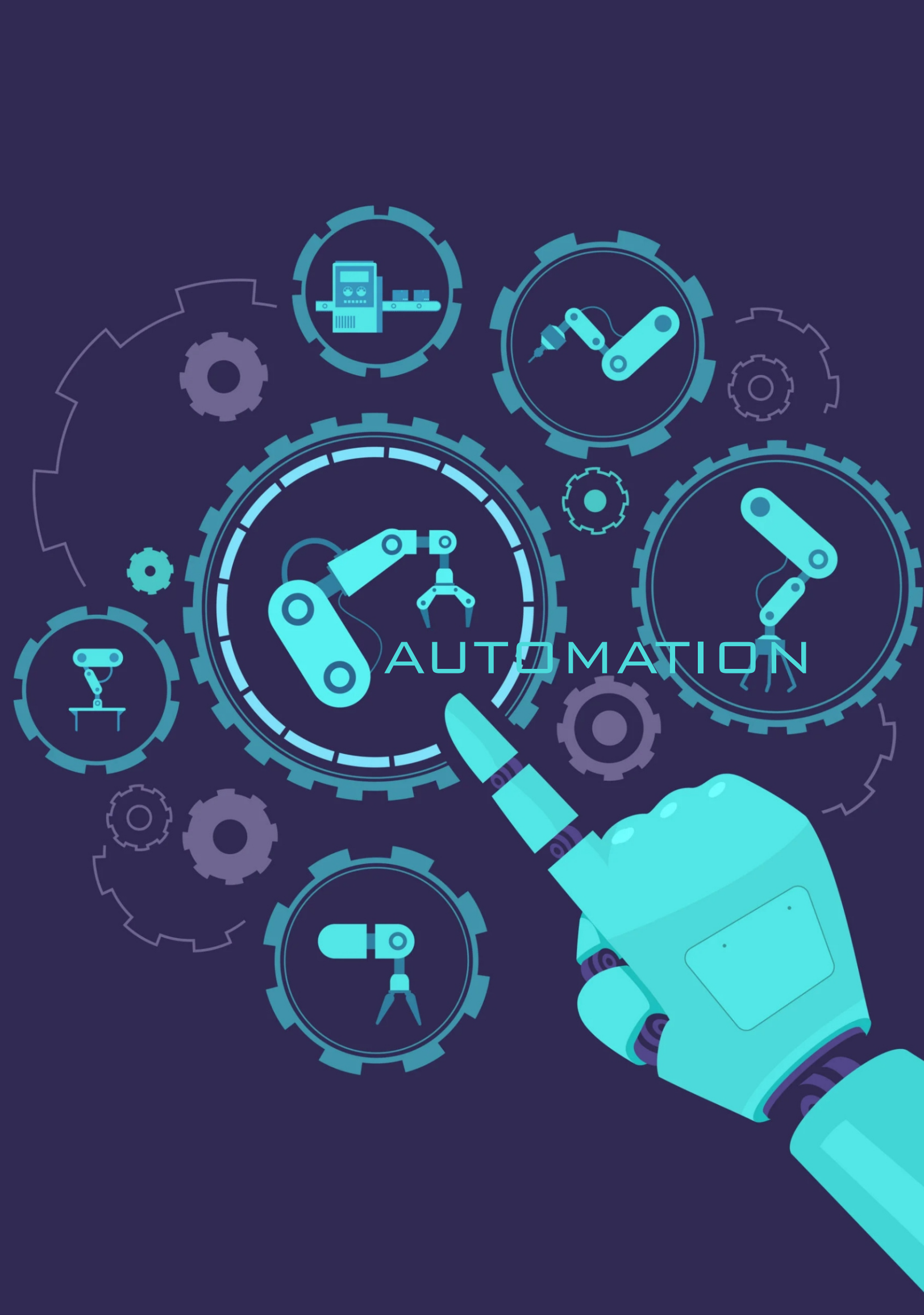
FIRE CABINET WITH LAY FLAT HOSE



FIRE EQUIPMENT CABINET



WET BARREL FIRE HYDRANTS



AUTOMATION

OPTIONAL EQUIPMENT

RELATIVE HUMIDITY AND
TEMPERATURE SENSOR



DIFFERENTIAL PRESSURE
MONITOR

OPTIONAL EQUIPMENT



ROTARY AIR DAMPER
ACTUATOR

ELECTRO-HYDRAULIC
ACTUATOR



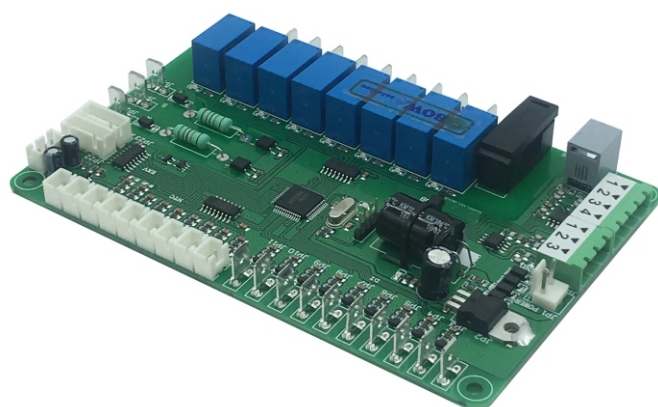
PRESSURE SENSOR FOR
NEUTRAL AND SLIGHTLY
AGGRESSIVE LIQUIDS AND
GASES

OPTIONAL EQUIPMENT



FAN SPEED CONTROLLER

PROPORTIONAL THERMOSTAT



UNIVERSAL HEAT RECOVERY CONTROLLER

An aerial night photograph of a city, likely Dubai, showing a dense cluster of skyscrapers and a complex multi-level highway interchange. The buildings are illuminated with various colors, including blue, green, and yellow. The highway interchange is a complex network of roads with many overpasses and ramps, illuminated with warm yellow lights. The overall scene is a vibrant, illuminated urban landscape.

GENERATORS AND UNINTERRUPTIBLE POWER SUPPLY

GENERATORS



DIESEL AND PETROL GENERATORS
• Power range: 712 kW
• 1900 kW



UNINTERRUPTIBLE POWER SUPPLY
Power range: 30 kW - 1250 kW

COOLING ROOMS



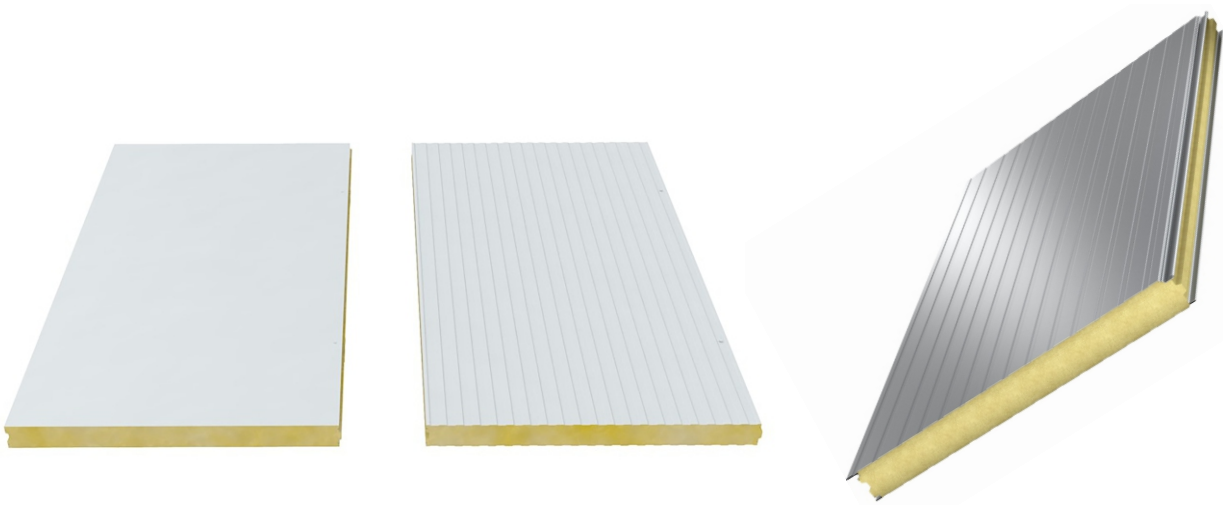
COOLING ROOMS



- COOLING CHAMBERS WITH CENTRAL COOLING SYSTEM
- REFRIGERATION CHAMBERS WITH SPLIT COOLING SYSTEM



COOLING ROOMS



PANEL OF REFRIGERATING CHAMBERS



DOORS OF REFRIGERATING CHAMBERS



HOSPITAL EQUIPMENT

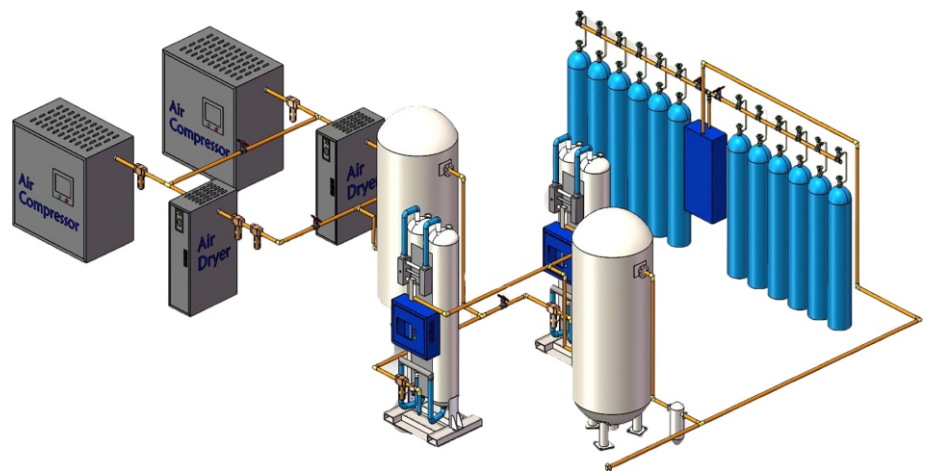
HOSPITAL EQUIPMENT



OPERATING ROOM HEPA FILTER



OPERATING ROOM CONTROL PANEL



MEDICAL CENTRAL GAS SYSTEMS
Oxygen And Nitrogen Power Stations

STAINLESS STEEL FOR OPERATING THEATERS



STAINLESS STEEL FOR OPERATING THEATERS



OPERATING THEATRE CUPBOARD



OPERATION ROOM BUILT-IN CUPBOARD



CAP, BONNET AND MASK CUPBOARD (HYGIENE CUPBOARD)



SURGICAL INSTRUMENT CONSERVING AND CARRYING TROLLEY

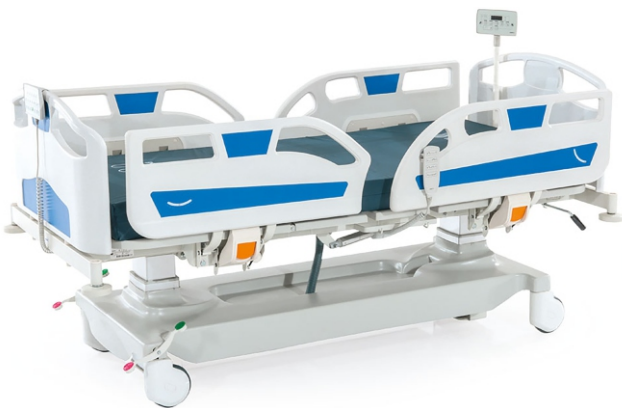


BOWL STANDS, SINGLE AND DOUBLE

HOSPITAL EQUIPMENT



HIGH CAPACITY STORAGE SYSTEMS



ELECTRONIC ICU BEDS



OPERATING TABLE



MULTI-FUNCTIONAL MEDICAL TROLLEY

HOSPITAL EQUIPMENT



ANESTHESIA DEVICES



MEC DIFFUSION



DEFIBRILLATOR WITH MONITOR

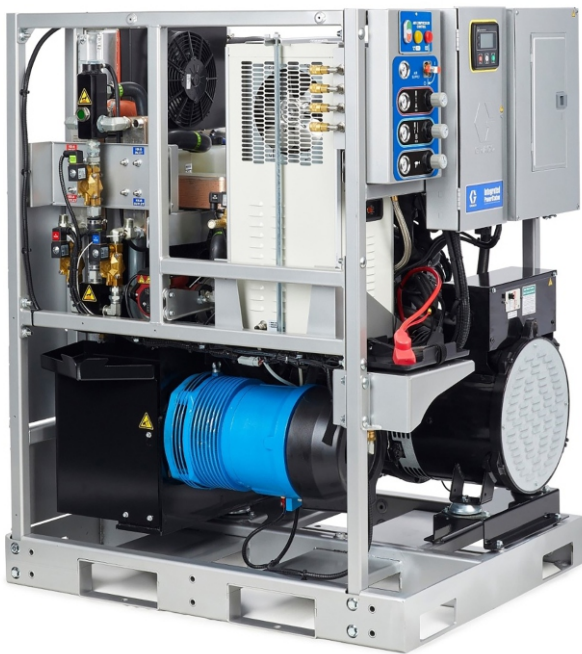


SURGICAL OPERATING LAMP



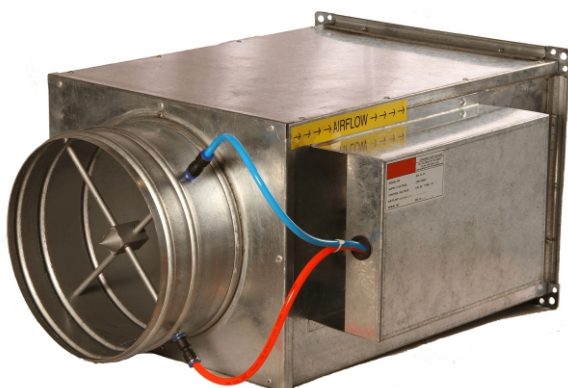
SURGICAL OPERATING
HAND TOOLS

HOSPITAL EQUIPMENT



COMPRESSOR POWER PLANTS

VACUUM POWER STATIONS FOR LIQUID MEDICAL DISINFECTION



AIR MANGMENT SYSTEMS VAV / CAV



VOLMAT TRADE

VOLMAT İnş. Taah. Proje San. İç ve
Dış Tic. Ltd. Şti.

Address: İran Caddesi Karum AVM
No:21 D Blok No: 400 Çankaya 7
Ankara

Email: info@vol-mat.com

Phone: +90 312 999 35 08

Fax: +90 312 999 33 23

Uzbekistan ecfif0

Comfort Cooling Service Llc

Uzbekistan,tashkent City,mirabad

District,nukus Str.19/2

www.vol-mat.com